

# alluminato

La serie "CF" è realizzata in acciaio alluminato SP.20/10, senza guarnizione. Il sistema di giunzione è di tipo a "bicchiere", mentre il sistema di saldatura è longitudinale continuo al TIG. Il canale da fumo, come il condotto fumario è idoneo per l'evacuazione dei fumi secchi per funzionamento in pressione negativa (N1). La temperatura max di esercizio per funzionamento in N1 è tra i 600° e 800° C. Questa serie ha brillantemente superato il test di corrosione V2. Le canne fumarie in acciaio alluminato sono particolarmente indicate per caminetti a legna, stufe, forni, barbecue soprattutto per le caratteristiche antiossidanti e di resistenza alle alte temperature e per lo spessore di tale prodotto. Sono ammessi solo combustibili solidi. Inoltre hanno la superficie interna liscia, permettendone così una facile pulizia.

The "CF" series is made in aluminized steel TH.20/10, without gasket. The joint system is of male/female type while the welding system is longitudinal continuous to TIG. The connecting flue pipe, such as the flue liner are suitable for the evacuation of dried smokes for operations under negative pressure (N1). The maximum operating temperature is between 600°C and 800°C for N1 operations. This series has brilliantly passed the corrosion test V2. The aluminized steel chimneys are particularly suitable for wood burning fireplaces, stoves, ovens, barbecues thanks to their antioxidant and high temperatures resistant properties and thanks to the thickness of a such product. Only solid fuels are allowed. They are also easy to clean thanks to their smooth inner surface.

La série "CF" est réalisée en acier aluminisé EP.20/10, sans joint. Le système de jonction est de type mâle/femelle tandis que le système de soudage est longitudinal en continu au TIG. Le canal de fumée et même le conduit sont adaptés à l'évacuation des fumées sèches avec un fonctionnement en pression négative (N1). La température maximale pour le fonctionnement en N1 est comprise entre 600°C et 800°C. Il a passé avec succès le test de corrosion V2. Les cheminées en acier aluminisé sont particulièrement indiquées pour les foyers à bois, poêles, fours, barbecues surtout grâce à ses propriétés anti-oxydantes, sa résistance aux températures élevées et l'épaisseur du produit même. Seulement les combustibles solides sont admis. Vue la surface Intérieure lisse, ils sont également facile à nettoyer.

## ELEMENTO LINEARE - STRAIGHT ELEMENT - LONGUEUR DROITE

Lunghezza / Length / Longueur: 1000 mm

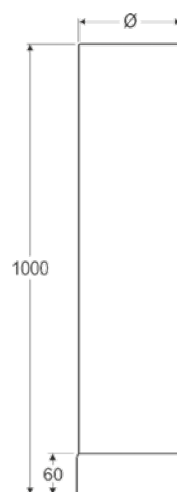
Cod. / Code / Réf.	Ø
CF140X1000	140
CF150X1000	150
CF160X1000	160
CF180X1000	180
CF200X1000	200
CF230X1000	230
CF250X1000	250
CF300X1000	300

Lunghezza / Length / Longueur: 500 mm

CF140X500	140
CF150X500	150
CF160X500	160
CF180X500	180
CF200X500	200
CF230X500	230
CF250X500	250
CF300X500	300

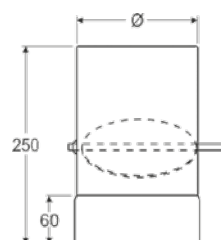
Lunghezza / Length / Longueur: 250 mm

CF140X250	140
CF150X250	150
CF160X250	160
CF180X250	180
CF200X250	200
CF230X250	230
CF250X250	250
CF300X250	300



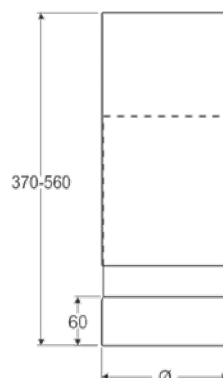
## TUBO CON VALVOLA - PIPE WITH VALVE - TUYAU AVEC VALVE

Cod. / Code / Réf.	Ø
CFV140X250	140
CFV150X250	150
CFV160X250	160
CFV180X250	180
CFV200X250	200
CFV230X250	230
CFV250X250	250
CFV300X250	300



**TELESCOPICO MEDIO - ADJUSTABLE PIPE - LONGUEUR DROITE AJUSTABLE**

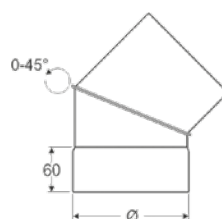
Cod. / Code / Réf.	Ø
TEL560/140	140
TEL560/150	150
TEL560/160	160
TEL560/180	180
TEL560/200	200
TEL560/230	230
TEL560/250	250
TEL560/300	300



ALLUMINATO

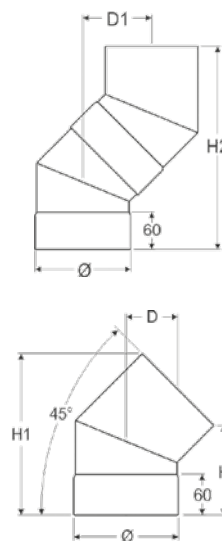
**CURVA REGOLABILE - ADJUSTABLE ELBOW - COUDE ORIENTABLE**

Cod. / Code / Réf.	Ø
CUREG140	140
CUREG150	150
CUREG160	160
CUREG180	180
CUREG200	200
CUREG230	230
CUREG250	250
CUREG300	300



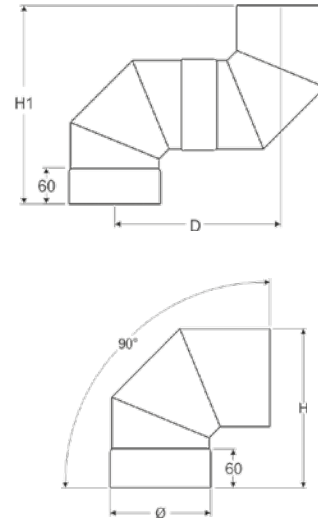
**CURVA 45° - 45° ELBOW - COUDE À 45°**

Cod. / Code / Réf.	Ø	H	H1	H2	D	D1
CUR140/45	140	137	236	330	77	112
CUR150/45	150	141	247	345	80	118
CUR160/45	160	137	250	344	80	118
CUR180/45	180	145	272	375	86	130
CUR200/45	200	140	281	379	87	132
CUR230/45	230	145	308	410	94	145
CUR250/45	250	140	317	414	95	147
CUR300/45	300	155	357	460	104	166



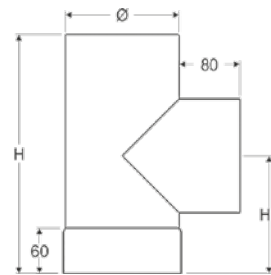
**CURVA 90° - 90° ELBOW - COUDE À 90°**

Cod. / Code / Réf.	Ø	H	H1	D
CUR140/90	140	245	350	290
CUR150/90	150	252	354	294
CUR160/90	160	265	370	310
CUR180/90	180	277	374	314
CUR200/90	200	306	413	353
CUR230/90	230	331	432	372
CUR250/90	250	355	460	400
CUR300/90	300	405	510	450



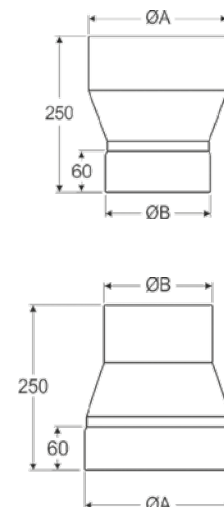
**T 90° - 90° TEE - TÉ À 90°**

Cod. Maschio / Male code / Réf. Mâle	Cod. Femmina / Female / Femelle	Ø	H	H1
T140/90M	T140/90F	140	310	155
T150/90M	T150/90F	150	320	160
T160/90M	T160/90F	160	320	160
T180/90M	T180/90F	180	506	250
T200/90M	T200/90F	200	500	500
T230/90M	T230/90F	230	500	250
T250/90M	T250/90F	250	500	250
T300/90M	T300/90F	300	500	250



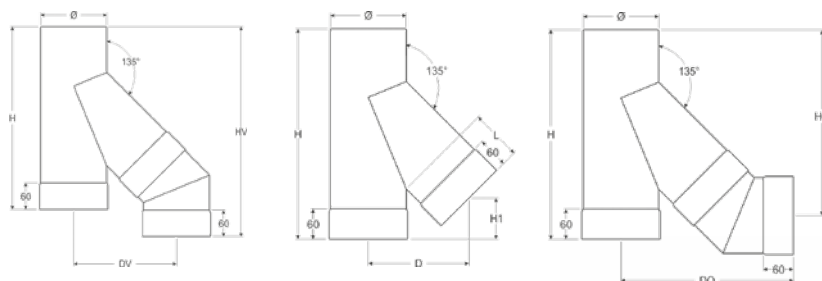
**RIDUZIONE / MAGGIORAZIONE - REDUCER / INCREASER - RÉDUCTION / AUGMENTATION**

Cod. Maschio / Male code / Réf. Mâle	Cod. Femmina / Female code / Réf. Femelle	ØA-RID	ØB-RID	ØA-MAG	ØB-MAG
RID160/140	MAG140/160	160	140	160	140
RID180/160	MAG160/180	180	160	180	160
RID200/180	MAG180/200	200	180	200	180
RID230/200	MAG200/230	230	200	230	200
RID250/200	MAG200/250	250	200	250	200
RID250/230	MAG230/250	250	230	250	230
RID300/250	MAG250/300	300	250	300	250



**RIDUZ:** Ø maggiore FEMMINA, Ø minore MASCHIO - Bigger Ø FEMALE, smaller Ø MALE - Ø plus grande FEMELLE, Ø plus petite MÂLE  
**MAGG:** Ø maggiore MASCHIO, Ø minore FEMMINA - Bigger Ø MALE, smaller Ø FEMALE - Ø plus grande MÂLE, Ø plus petite FEMELLE

**T 135° - 135° TEE - TÈ À 135°**



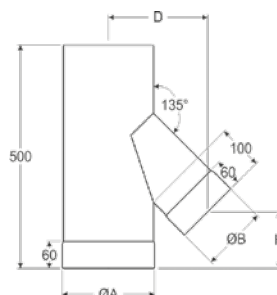
Cod. Maschio / Male code / Réf. Mâle	Cod. Femmina / Female / Femelle	Ø	H	H1	D	L	DO	HO	DV	HV
T140/135M	T140/135F	140	370	61	194	105	338	343	228	452
T150/135M	T150/135F	150	420	82	203	105	354	375	240	439
T160/135M	T160/135F	160	500	119	211	105	362	418	248	532
T180/135M	T180/135F	180	500	112	228	105	394	432	272	554
T200/135M	T200/135F	200	500	105	245	105	403	440	280	563
T230/135M	T230/135F	230	500	87	278	105	455	457	322	590
T250/135M	T250/135F	250	500	87	288	105	474	465	340	599
T300/135M	T300/135F	300	700	170	330	105	539	592	392	739



ALLUMINATO

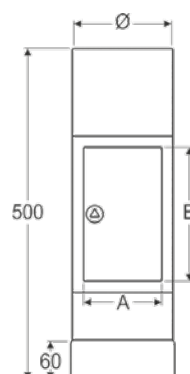
**RACCORDO CAMINO-FORNO AT 135° - 135° REDUCING TEE TO Ø 140 - TÈ À 135° REDUIT Ø 140**

Cod. / Code / Réf.	ØA	ØB	H	D
CAFO200-140M	200	140	130	220
CAFO200-140F	200	140	130	220
CAFO250-140M	250	140	130	245
CAFO250-140F	250	140	130	245



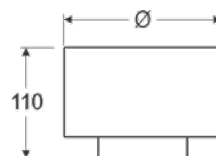
**CAMERA DI RACCOLTA CENERE - ASH COLLECTION ELEMENT - ÉLÉMENT DE RECUEIL DES CENDRES**

Cod. / Code / Réf.	Ø	A	B
CARAC140	140	95	155
CARAC150	150	95	155
CARAC160	160	95	155
CARAC180	180	125	235
CARAC200	200	125	235
CARAC230	230	125	235
CARAC250	250	125	235
CARAC300	300	125	235



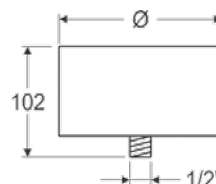
**TAPPO CON MANIGLIA - DRAIN PLUG WITH HANDLE - BOUCHON DE CONDENSATION ÉTANCHE**

Cod. Maschio / Male code / Réf. Mâle	Cod. Femmina / Female code / Réf. Femelle	Ø
MAN140M	MAN140F	140
MAN150M	MAN150F	150
MAN160M	MAN160F	160
MAN180M	MAN180F	180
MAN200M	MAN200F	200
MAN230M	MAN230F	230
MAN250M	MAN250F	250
MAN300M	MAN300F	300



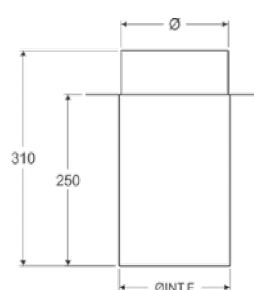
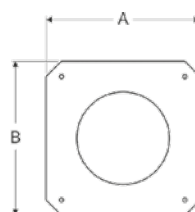
**RACCOGLI CONDENSA - DRAIN PLUG - BOUCHON DE CONDENSATION**

Cod. Maschio / Male code / Réf. Mâle	Cod. Femmina / Female code / Réf. Femelle	Ø
CON140M	CON140F	140
CON150M	CON150F	150
CON160M	CON160F	160
CON180M	CON180F	180
CON200M	CON200F	200
CON230M	CON230F	230
CON250M	CON250F	250
CON300M	CON300F	300



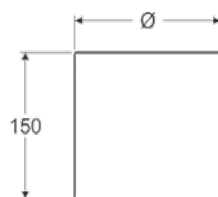
**ATTRAVERSAMENTO SOLAIO TELESCOPICO - ADJUSTABLE INTERMEDIATE ANCHOR PLATE - MODULE DE TRAVERSEMENT DE SOL AJUSTABLE**

Cod. / Code / Réf.	Ø	A	B
SOL140	140	230	230
SOL150	150	240	240
SOL160	160	250	250
SOL180	180	280	280
SOL200	200	300	300
SOL230	230	333	333
SOL250	250	333	333
SOL300	300	380	380



**TRONCHETTO M/M - M/M COUPLER - MANCHETTE M/M**

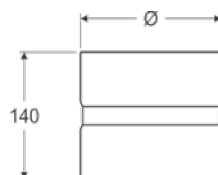
Cod. / Code / Réf.	Ø
TMM140	140
TMM150	150
TMM160	160
TMM180	180
TMM200	200
TMM230	230
TMM250	250
TMM300	300



ALLUMINATO

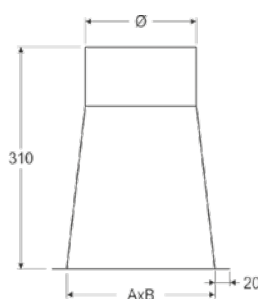
**TRONCHETTO F/F - F/F COUPLER - MANCHETTE F/F**

Cod. / Code / Réf.	Ø
TFF140	140
TFF150	150
TFF160	160
TFF180	180
TFF200	200
TFF230	230
TFF250	250
TFF300	300



**ADATTATORE QUADRO/TONDO - SQUARE TO ROUND ADAPTER - ADAPTATEUR CARRÉ À ROND**

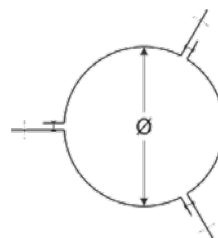
Cod. / Code / Réf.	Ø	A	B
AD200A200	200	200	200
AD250A200	200	250	250
AD250A230	230	250	250
AD250A250	250	250	250
AD300A200	200	300	300
AD300A250	250	300	300
AD300A300	300	300	300





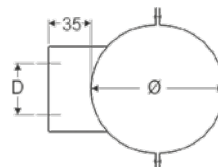
**COLLARE PER CAVITIRANTI - GUY WIRE BRACKET - BRIDE DE HAUBANAGE**

Cod. / Code / Réf.	Ø
COL140	140
COL150	150
COL160	160
COL180	180
COL200	200
COL230	230
COL250	250



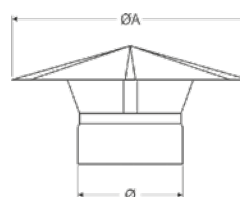
**STAFFA DI FISSAGGIO A PARETE - WALL BRACKET - COLLIER MURAL**

Cod. / Code / Réf.	Ø	D
STAF140	140	50
STAF150	150	50
STAF160	160	50
STAF180	180	70
STAF200	200	70
STAF230	230	70
STAF250	250	70
STAF300	300	70



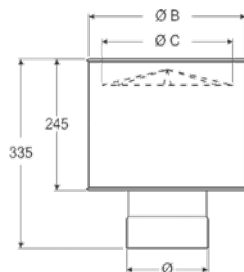
**COMIGNOLO CINESE - CHINESE CAP - CHAPEAU CHINOIS**

Cod. Maschio / Male code / Réf. Mâle	Cod. Femmina / Female code / Réf. Femelle	Ø	ØA
CIN140M	CIN140F	140	335
CIN150M	CIN150F	150	335
CIN160M	CIN160F	160	335
CIN180M	CIN180F	180	385
CIN200M	CIN200F	200	385
CIN230M	CIN230F	230	435
CIN250M	CIN250F	250	435
CIN300M	CIN300F	300	485



**COMIGNOLO ANTIVENTO - WINDPROOF CAP - CHAPEAU ANTI-INTEMPÉRIE**

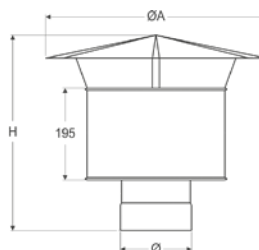
Cod. Maschio / Male code / Réf. Mâle	Cod. Femmina / Female code / Réf. Femelle	Ø	H	A	hF
CAV140M	CAV140F	140	260	260	200
CAV150M	CAV150F	150	260	260	200
CAV160M	CAV160F	160	280	260	200
CAV180M	CAV180F	180	280	300	200
CAV200M	CAV200F	200	320	310	250
CAV230M	CAV230F	230	340	370	250
CAV250M	CAV250F	250	340	420	250
CAV300M	CAV300F	300	400	470	310



ALLUMINATO

**COMIGNOLO ANTIPIOGGIA - WATERPROOF CAP - CHAPEAU ANTI-PLUIE**

Cod. Maschio / Male code / Réf. Mâle	Cod. Femmina / Female code / Réf. Femelle	Ø	H	ØA
CAP140M	CAP140F	140	400	485
CAP150M	CAP150F	150	400	485
CAP160M	CAP160F	160	400	485
CAP180M	CAP180F	180	400	535
CAP200M	CAP200F	200	400	535
CAP230M	CAP230F	230	440	585
CAP250M	CAP250F	250	440	585
CAP300M	CAP300F	300	440	635



# CANNE FUMARIE OVALI - OVAL FLUES - CONDUITS DE FUMÉE OVALES

## ELEMENTO LINEARE - STRAIGHT ELEMENT - LONGUEUR DROITE

Lunghezza / Length / Longueur: 1000 mm

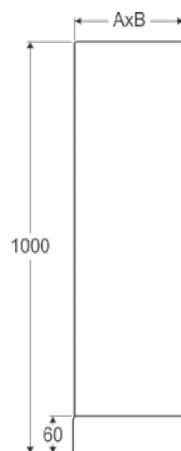
Cod. / Code / Réf.	A	B
CF013X18X1000	130	180
CF013X27X1000	130	270
CF015X25X1000	150	250
CF015X30X1000	150	300
CF017X23X1000	170	230
CF017X27X1000	170	270
CF017X37X1000	170	370
CF020X30X1000	200	300

Lunghezza / Length / Longueur: 500 mm

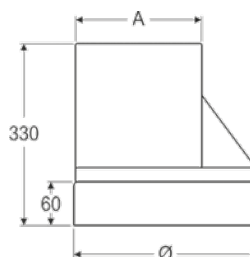
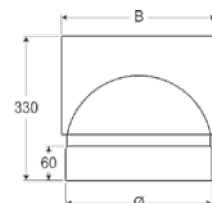
CF013X18X500	130	180
CF013X27X500	130	270
CF015X25X500	150	250
CF015X30X500	150	300
CF017X23X500	170	230
CF017X27X500	170	270
CF017X37X500	170	370
CF020X30X500	200	300

**Lunghezza 1000 su misura** - Custom length 1000 - Longueur 1000 sur mesure: € 128,50

**Lunghezza 500 su misura** - Custom length 500 - Longueur 500 sur mesure: € 83,20



## ADATTATORE OVALE/TONDO - OVAL TO ROUND ADAPTER - ADAPTATEUR OVALE À ROND



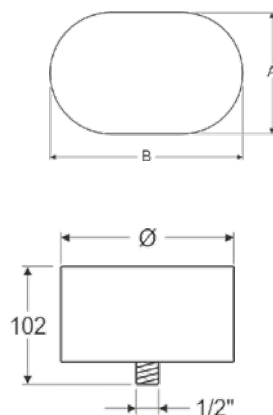
Cod. / Code / Réf.	Ø	A	B
ADAT13X18A200	200	130	180
ADAT13X27A200	200	130	270
ADAT15X25A200	200	150	250
ADAT15X30A250	250	150	300
ADAT17X23A200	200	170	230
ADAT17X27A250	250	170	270
ADAT17X37A300	300	170	370
ADAT20X30A250	250	200	300



**Adattatore su misura** - Custom adapter - Adaptateur sur mesure: € 189,20

## RACCOGLI CONDENSA OVALE - OVAL DRAIN PLUG - BOUCHON DE CONDENSATION OVALE

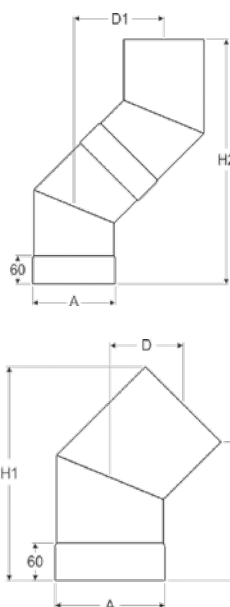
Cod. Maschio / Male code / Réf. Mâle	Cod. Femmina / Female / Femelle	A	B
CON130X180M	CON130X180F	130	180
CON130X270M	CON130X270F	130	270
CON150X250M	CON150X250F	150	250
CON150X300M	CON150X300F	150	300
CON170X230M	CON170X230F	170	230
CON170X270M	CON170X270F	170	270
CON170X370M	CON170X370F	170	370
CON200X300M	CON200X300F	200	300



Raccogli condensa su misura - Custom drain plug - Bouchon de condensation sur mesure: € 112,30

## CURVA TIPO 1 - TYPE 1 ELBOW - COUDE TYPE 1

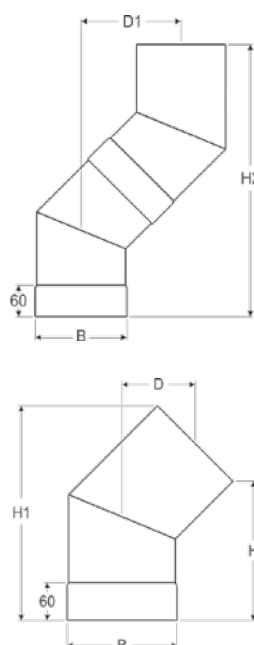
Cod. / Code / Réf.	H	H1	H2	D	D1	A	B
CUROV13X18/1	249	341	548	122	202	130	180
CUROV13X27/1	249	341	548	122	202	130	270
CUROV15X25/1	235	341	534	119	196	150	250
CUROV15X30/1	235	341	534	119	196	150	300
CUROV17X23/1	221	341	520	117	191	170	230
CUROV17X27/1	221	341	520	117	191	170	270
CUROV17X37/1	221	341	520	117	191	170	370
CUROV20X30/1	200	341	499	112	182	200	300



Curva su misura - Custom elbow - Coude sur mesure: € 166,50

## CURVA TIPO 2 - TYPE 2 ELBOW - COUDE TYPE 2

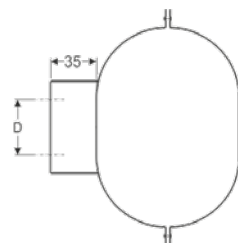
Cod. / Code / Réf.	H	H1	H2	D	D1	A	B
CUROV13X18/2	211	341	513	115	188	211	341
CUROV13X27/2	151	341	449	102	161	151	341
CUROV15X25/2	165	341	464	105	167	165	341
CUROV15X30/2	129	341	428	97	153	129	341
CUROV17X23/2	179	341	479	108	173	179	341
CUROV17X27/2	151	341	449	102	161	151	341
CUROV17X37/2	su richiesta / upon request / sur demande						
CUROV20X30/2	129	341	428	97	153	129	341



Curva su misura - Custom elbow - Coude sur mesure: € 166,50

## STAFFA DI FISSAGGIO A PARETE - WALL BRACKET - COLLIER MURAL

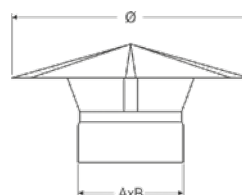
Cod. / Code / Réf.	A	B
STAFOV130X180	130	180
STAFOV130X270	130	270
STAFOV150X250	150	250
STAFOV150X300	150	300
STAFOV170X230	170	230
STAFOV170X270	170	270
STAFOV170X370	170	370
STAFOV200X300	200	300



Staffa a parete su misura - Custom wall bracket - Collier mural sur mesure: € 56,30

## COMIGNOLO CINESE - CHINESE CAP - CHAPEAU CHINOIS

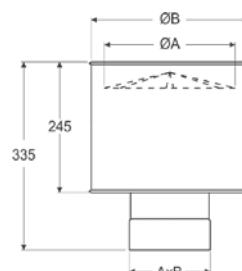
Cod. Maschio / Male code / Réf. Mâle	Cod. Femmina / Female code / Réf. Femelle	Ø	A	B
CIN130X180M	CIN130X180F	385	130	180
CIN130X270M	CIN130X270F	435	130	270
CIN150X250M	CIN150X250F	435	150	250
CIN150X300M	CIN150X300F	485	150	300
CIN170X230M	CIN170X230F	435	170	230
CIN170X270M	CIN170X270F	485	170	270
CIN170X370M	CIN170X370F	580	170	370
CIN200X300M	CIN200X300F	485	200	300



Comignolo cinese su misura - Custom chinese cap - Chapeau chinois sur mesure: € 195,60

## COMIGNOLO ANTIVENTO - WINDPROOF CAP - CHAPEAU ANTI-INTEMPÉRIE

Cod. Maschio / Male code / Réf. Mâle	Cod. Femmina / Female code / Réf. Femelle	ØA	ØB	A	B
CAV130X180M	CAV130X180F	250	310	130	180
CAV130X270M	CAV130X270F	350	390	130	270
CAV150X250M	CAV150X250F	320	370	150	250
CAV150X300M	CAV150X300F	370	420	150	300
CAV170X230M	CAV170X230F	300	360	170	230
CAV170X270M	CAV170X270F	350	390	170	270
CAV170X370M	CAV170X370F	430	480	170	370
CAV200X300M	CAV200X300F	380	420	200	300



Comignolo antivento su misura - Custom windproof cap - Chapeau anti-intempérie: € 337,50

