

ELEMENTO LINEARE - STRAIGHT ELEMENT - LONGUEUR DROITE
FASCETTA STRINGITUBO INCLUSA / CLAMP INCLUDED / COLLIER DE JONCTION COMPRIS

Lunghezza / Length / Longueur: 1000 mm

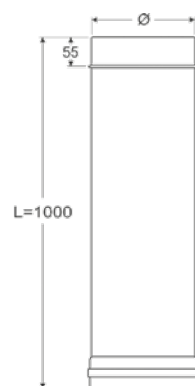
| Cod. / Code / Réf. | Ø Interno / Internal / Intérieur | Ø Esterno / External / Extérieur |
|--------------------|----------------------------------|----------------------------------|
| DPG80X1000 | *80 | 130 |
| DPG100X1000 | *100 | 150 |
| DPG120X1000 | *120 | 170 |
| DPG130X1000 | *130 | 180 |
| DPG140X1000 | *140 | 190 |
| DPG150X1000 | *150 | 200 |
| DPG180X1000 | 180 | 230 |
| DPG200X1000 | 200 | 250 |
| DPG250X1000 | 250 | 300 |
| DPG300X1000 | 300 | 350 |
| DPG350X1000 | 350 | 400 |
| 50DPG350X1000 | 350 | 450 |
| 50DPG400X1000 | 400 | 500 |
| 50DPG450X1000 | 450 | 550 |
| 50DPG500X1000 | 500 | 600 |

Lunghezza / Length / Longueur: 500 mm

| | | |
|--------------|------|-----|
| DPG80X500 | *80 | 130 |
| DPG100X500 | *100 | 150 |
| DPG120X500 | *120 | 170 |
| DPG130X500 | *130 | 180 |
| DPG140X500 | *140 | 190 |
| DPG150X500 | *150 | 200 |
| DPG180X500 | 180 | 230 |
| DPG200X500 | 200 | 250 |
| DPG250X500 | 250 | 300 |
| DPG300X500 | 300 | 350 |
| DPG350X500 | 350 | 400 |
| 50DPG350X500 | 350 | 450 |
| 50DPG400X500 | 400 | 500 |
| 50DPG450X500 | 450 | 550 |
| 50DPG500X500 | 500 | 600 |

Lunghezza / Length / Longueur: 250 mm

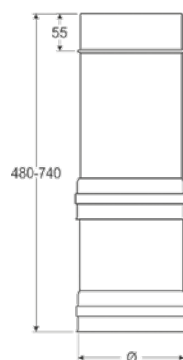
| | | |
|--------------|------|-----|
| DPG80X250 | *80 | 130 |
| DPG100X250 | *100 | 150 |
| DPG120X250 | *120 | 170 |
| DPG130X250 | *130 | 180 |
| DPG140X250 | *140 | 190 |
| DPG150X250 | *150 | 200 |
| DPG180X250 | 180 | 230 |
| DPG200X250 | 200 | 250 |
| DPG250X250 | 250 | 300 |
| DPG300X250 | 300 | 350 |
| DPG350X250 | 350 | 400 |
| 50DPG350X250 | 350 | 450 |
| 50DPG400X250 | 400 | 500 |
| 50DPG450X250 | 450 | 550 |
| 50DPG500X250 | 500 | 600 |



* **Guarnizione inclusa** / Gasket included / Joint d'étanchéité compris
 ** **Quotazioni su richiesta** / Quotations upon request / Devis sur demande

ELEMENTO TELESCOPICO (mm 480 X 740) - ADJUSTABLE PIPE - LONGUEUR DROITE AJUSTABLE

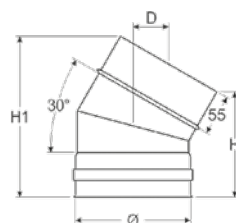
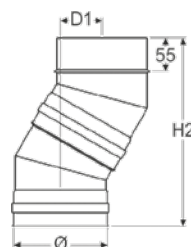
| Cod. / Code / Réf. | Ø Interno / Internal / Intérieur | Ø Esterno / External / Extérieur |
|--------------------|----------------------------------|----------------------------------|
| DPGTEL80 | *80 | 130 |
| DPGTEL100 | *100 | 150 |
| DPGTEL120 | *120 | 170 |
| DPGTEL130 | *130 | 180 |
| DPGTEL140 | *140 | 190 |
| DPGTEL150 | *150 | 200 |
| DPGTEL180 | 180 | 230 |
| DPGTEL200 | 200 | 250 |
| DPGTEL250 | 250 | 300 |
| DPGTEL300 | 300 | 350 |
| DPGTEL350 | 350 | 400 |
| 50DPGTEL350 | 350 | 450 |
| 50DPGTEL400 | 400 | 500 |
| 50DPGTEL450 | 450 | 550 |
| 50DPGTEL500 | 500 | 600 |



Diametri maggiori su richiesta - Bigger diameters upon request - Diamètres plus grand sur demande

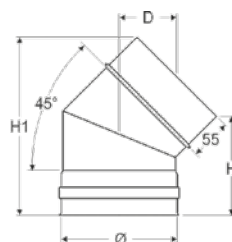
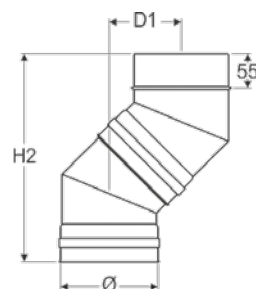
CURVA 30° - 30° ELBOW - COUDE À 30°

| Cod. / Code / Réf. | H | H1 | H2 | D | D1 | N° SET | Ø Int. / Inte. / Intér. | Ø Est. / Exte. / Extér. |
|--------------------|-----|-----|-----|----|-----|--------|-------------------------|-------------------------|
| DPGC80/30 | 143 | 208 | 303 | 47 | 66 | 2 | *80 | 130 |
| DPGC100/30 | 142 | 217 | 311 | 48 | 69 | 2 | *100 | 150 |
| DPGC120/30 | 152 | 237 | 324 | 52 | 76 | 2 | *120 | 170 |
| DPGC130/30 | 141 | 231 | 324 | 50 | 72 | 2 | *130 | 180 |
| DPGC140/30 | 143 | 238 | 333 | 51 | 74 | 2 | *140 | 190 |
| DPGC150/30 | 162 | 262 | 377 | 57 | 86 | 2 | *150 | 200 |
| DPGC180/30 | 136 | 251 | 340 | 53 | 76 | 2 | 180 | 230 |
| DPGC200/30 | 150 | 275 | 378 | 57 | 86 | 2 | 200 | 250 |
| DPGC250/30 | 139 | 289 | 380 | 57 | 87 | 2 | 250 | 300 |
| DPGC300/30 | 144 | 319 | 415 | 62 | 96 | 2 | 300 | 350 |
| DPGC350/30 | 142 | 342 | 436 | 65 | 102 | 2 | 350 | 400 |
| 50DPGC350/30 | 142 | 367 | 461 | 68 | 109 | 2 | 350 | 450 |
| 50DPGC400/30 | 144 | 394 | 490 | 72 | 116 | 2 | 400 | 500 |
| 50DPGC450/30 | 144 | 419 | 515 | 75 | 123 | 2 | 450 | 550 |
| 50DPGC500/30 | 144 | 444 | 542 | 79 | 131 | 2 | 500 | 600 |



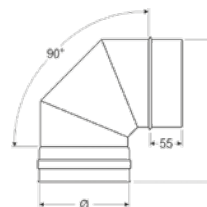
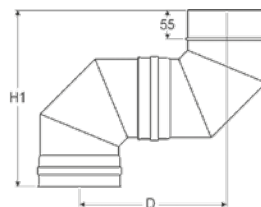
CURVA 45° - 45° ELBOW - COUDE À 45°

| Cod. / Code / Réf. | H | H1 | H2 | D | D1 | N° SET | Ø Int. / Inte. / Intér. | Ø Est. / Exte. / Extér. |
|--------------------|-----|-----|-----|-----|-----|--------|-------------------------|-------------------------|
| DPGC80/45 | 128 | 220 | 309 | 72 | 105 | 2 | *80 | 130 |
| DPGC100/45 | 132 | 238 | 332 | 77 | 115 | 2 | *100 | 150 |
| DPGC120/45 | 137 | 257 | 354 | 81 | 124 | 2 | *120 | 170 |
| DPGC130/45 | 137 | 264 | 362 | 83 | 127 | 2 | *130 | 180 |
| DPGC140/45 | 137 | 271 | 369 | 84 | 130 | 2 | *140 | 190 |
| DPGC150/45 | 133 | 275 | 369 | 84 | 130 | 2 | *150 | 200 |
| DPGC180/45 | 137 | 299 | 397 | 90 | 142 | 2 | 180 | 230 |
| DPGC200/45 | 130 | 308 | 401 | 91 | 143 | 2 | 200 | 250 |
| DPGC250/45 | 137 | 349 | 446 | 100 | 162 | 2 | 250 | 300 |
| DPGC300/45 | 137 | 384 | 482 | 108 | 177 | 2 | 300 | 350 |
| DPGC350/45 | 227 | 510 | 698 | 153 | 266 | 3 | 350 | 400 |
| 50DPGC350/45 | 224 | 542 | 727 | 159 | 278 | 3 | 350 | 450 |
| 50DPGC400/45 | 224 | 577 | 762 | 166 | 293 | 3 | 400 | 500 |
| 50DPGC450/45 | 224 | 613 | 797 | 173 | 307 | 3 | 450 | 550 |
| 50DPGC500/45 | 262 | 686 | 909 | 196 | 354 | 4 | 500 | 600 |



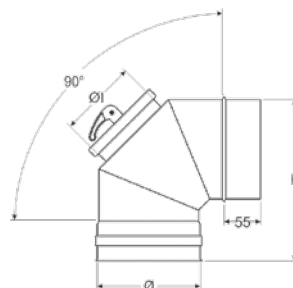
CURVA 90° - 90° ELBOW - COUDE À 90°

| Cod. / Code / Réf. | H | H1 | D | N° SET | Ø Int. / Inte. /Intér. | Ø Est. / Exte. / Extér. |
|--------------------|-----|-----|-----|--------|---------------------------|----------------------------|
| DPGC80/90 | 237 | 344 | 289 | 3 | *80 | 130 |
| DPGC100/90 | 243 | 337 | 282 | 3 | *100 | 150 |
| DPGC120/90 | 270 | 369 | 314 | 3 | *120 | 170 |
| DPGC130/90 | 269 | 359 | 304 | 3 | *130 | 180 |
| DPGC140/90 | 283 | 377 | 322 | 3 | *140 | 190 |
| DPGC150/90 | 298 | 396 | 341 | 3 | *150 | 200 |
| DPGC180/90 | 322 | 415 | 360 | 3 | 180 | 230 |
| DPGC200/90 | 346 | 443 | 388 | 3 | 200 | 250 |
| DPGC250/90 | 396 | 493 | 438 | 3 | 250 | 300 |
| DPGC300/90 | 461 | 572 | 517 | 4 | 300 | 350 |
| DPGC350/90 | 553 | 706 | 651 | 4 | 350 | 400 |
| 50DPGC350/90 | 642 | 833 | 778 | 5 | 350 | 450 |
| 50DPGC400/90 | 715 | 929 | 875 | 5 | 400 | 500 |
| 50DPGC450/90 | 756 | 961 | 906 | 5 | 450 | 550 |
| 50DPGC500/90 | 785 | 971 | 916 | 5 | 500 | 600 |



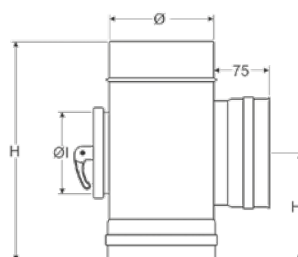
CURVA 90° CON ISPEZIONE - 90° ELBOW WITH INSPECTION DOOR - COUDE À 90° AVEC TRAPPE DE VISITE

| Cod. / Code / Réf. | H | Øi | N° SET | Ø Int. / Inte. /Intér. | Ø Est. / Exte. / Extér. |
|--------------------|-----|-----|--------|---------------------------|----------------------------|
| DPGC80/90ISP | 237 | 80 | 3 | *80 | 130 |
| DPGC100/90ISP | 243 | 80 | 3 | *100 | 150 |
| DPGC120/90ISP | 270 | 80 | 3 | *120 | 170 |
| DPGC130/90ISP | 269 | 80 | 3 | *130 | 180 |
| DPGC140/90ISP | 283 | 80 | 3 | *140 | 190 |
| DPGC150/90ISP | 298 | 80 | 3 | *150 | 200 |
| DPGC180/90ISP | 322 | 150 | 3 | 180 | 230 |
| DPGC200/90ISP | 346 | 150 | 3 | 200 | 250 |
| DPGC250/90ISP | 396 | 150 | 3 | 250 | 300 |
| DPGC300/90ISP | 461 | 150 | 4 | 300 | 350 |



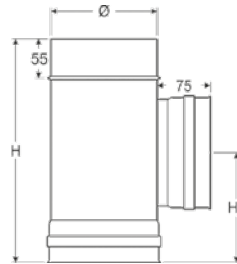
T 90° CON ISPEZIONE - 90° TEE WITH INSPECTION DOOR - TÉ À 90° AVEC TRAPPE DE VISITE

| Cod. / Code / Réf. | H | H1 | Øi | Ø Int. / Inte. /Intér. | Ø Est. / Exte. / Extér. |
|--------------------|-----|-----|-----|---------------------------|----------------------------|
| DPGT80/90ISP | 310 | 155 | 80 | *80 | 130 |
| DPGT100/90ISP | 320 | 160 | 80 | *100 | 150 |
| DPGT120/90ISP | 400 | 200 | 80 | *120 | 170 |
| DPGT130/90ISP | 500 | 250 | 80 | *130 | 180 |
| DPGT140/90ISP | 500 | 250 | 100 | *140 | 190 |
| DPGT150/90ISP | 500 | 250 | 100 | *150 | 200 |
| DPGT180/90ISP | 500 | 250 | 150 | 180 | 230 |
| DPGT200/90ISP | 500 | 250 | 150 | 200 | 250 |
| DPGT250/90ISP | 500 | 250 | 150 | 250 | 300 |
| DPGT300/90ISP | 500 | 250 | 200 | 300 | 350 |



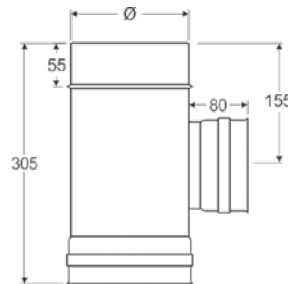
T 90° - 90° TEE - TÉ À 90°

| Cod. / Code / Réf. | H | H1 | Ø Int. / Inte. /Intér. | Ø Est. / Exte. / Extér. |
|--------------------|-----|-----|---------------------------|----------------------------|
| DPGT80/90 | 310 | 155 | *80 | 130 |
| DPGT100/90 | 320 | 160 | *100 | 150 |
| DPGT120/90 | 400 | 200 | *120 | 170 |
| DPGT130/90 | 500 | 250 | *130 | 180 |
| DPGT140/90 | 500 | 250 | *140 | 190 |
| DPGT150/90 | 500 | 250 | *150 | 200 |
| DPGT180/90 | 500 | 250 | 180 | 230 |
| DPGT200/90 | 500 | 250 | 200 | 250 |
| DPGT250/90 | 500 | 250 | 250 | 300 |
| DPGT300/90 | 500 | 250 | 300 | 350 |
| DPGT350/90 | 600 | 300 | 350 | 400 |
| 50DPGT350/90 | 800 | 400 | 350 | 450 |
| 50DPGT400/90 | 800 | 400 | 400 | 500 |
| 50DPGT450/90 | 800 | 400 | 450 | 550 |
| 50DPGT500/90 | 960 | 480 | 500 | 600 |



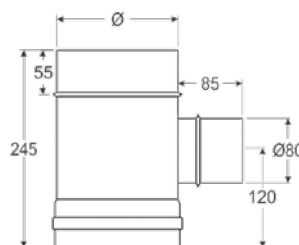
T 90° CON ATTACCO LATERALE RIDOTTO A Ø80-130 (DOPPIA PARETE) - 90° REDUCING TEE TO Ø 80-130 (DOUBLE WALL) - TÉ À 90° REDUIT Ø 80-130 (DOUBLE PAROI)

| Cod. / Code / Réf. | Ø Int. / Inte. /Intér. | Ø Est. / Exte. / Extér. |
|--------------------|---------------------------|----------------------------|
| DPGTR100-80 | *100 | 150 |
| DPGTR120-80 | *120 | 170 |
| DPGTR130-80 | *130 | 180 |
| DPGTR140-80 | *140 | 190 |
| DPGTR150-80 | *150 | 200 |
| DPGTR180-80 | 180 | 230 |
| DPGTR200-80 | 200 | 250 |
| DPGTR250-80 | 250 | 300 |
| DPGTR300-80 | 300 | 350 |



T 90° CON ATTACCO LATERALE RIDOTTO A Ø80 (MONO PARETE) - 90° REDUCING TEE TO Ø 80 (SINGLE WALL) - TÉ À 90° REDUIT Ø 80 (SIMPLE PAROI)

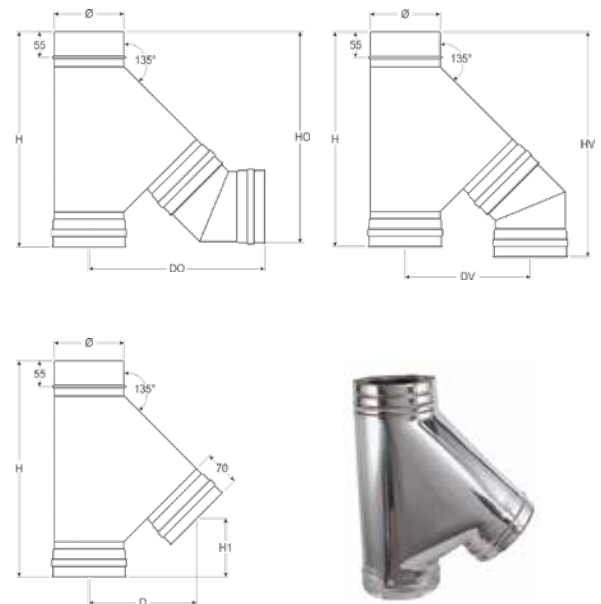
| Cod. / Code / Réf. | Ø Int. / Inte. /Intér. | Ø Est. / Exte. / Extér. |
|--------------------|---------------------------|----------------------------|
| DPGTR100-80MP | *100 | 150 |
| DPGTR120-80MP | *120 | 170 |
| DPGTR130-80MP | *130 | 180 |
| DPGTR140-80MP | *140 | 190 |
| DPGTR150-80MP | *150 | 200 |
| DPGTR180-80MP | 180 | 230 |
| DPGTR200-80MP | 200 | 250 |
| DPGTR250-80MP | 250 | 300 |
| DPGTR300-80MP | 300 | 350 |



Diametri maggiori su richiesta. Specificare M o F - Bigger diameters upon request. Indicate M or F - Diamètres plus grands sur demande. Indiquer si M ou F

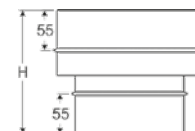
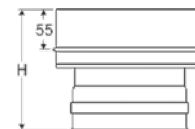
T 135° - 135° TEE - TÈ À 135°

| Cod. / Code / Réf. | H | H1 | D | DO | HO | DV | HV | Ø Int. / Inte. / Intér. | Ø Est. / Exte. / Extér. |
|--------------------|------|-----|-----|------|------|-----|------|-------------------------------|-------------------------------|
| DPGT80/135 | 435 | 120 | 209 | 344 | 414 | 241 | 451 | *80 | 130 |
| DPGT100/135 | 463 | 127 | 226 | 373 | 450 | 263 | 484 | *100 | 150 |
| DPGT120/135 | 491 | 134 | 243 | 400 | 485 | 285 | 516 | *120 | 170 |
| DPGT130/135 | 506 | 138 | 252 | 413 | 503 | 295 | 530 | *130 | 180 |
| DPGT140/135 | 520 | 141 | 260 | 425 | 520 | 305 | 544 | *140 | 190 |
| DPGT150/135 | 534 | 145 | 269 | 432 | 535 | 313 | 553 | *150 | 200 |
| DPGT180/135 | 615 | 168 | 301 | 480 | 614 | 352 | 626 | 180 | 230 |
| DPGT200/135 | 645 | 175 | 318 | 499 | 647 | 370 | 651 | 200 | 250 |
| DPGT250/135 | 715 | 193 | 361 | 565 | 734 | 432 | 727 | 250 | 300 |
| DPGT300/135 | 786 | 210 | 403 | 625 | 820 | 472 | 797 | 300 | 350 |
| DPGT350/135 | 750 | 159 | 416 | 745 | 904 | 529 | 920 | 350 | 400 |
| 50DPGT350/135 | 980 | 218 | 497 | 841 | 1107 | 617 | 1106 | 350 | 450 |
| 50DPGT400/135 | 980 | 204 | 537 | 898 | 1153 | 663 | 1138 | 400 | 500 |
| 50DPGT450/135 | 980 | 186 | 579 | 958 | 1203 | 713 | 1173 | 450 | 550 |
| 50DPGT500/135 | 1200 | 281 | 618 | 1053 | 1376 | 776 | 1353 | 500 | 600 |



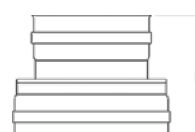
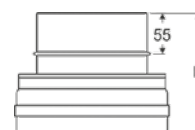
RACCORDO MONO/DOPPIA - SINGLE/DOUBLE WALL ADAPTER - RACCORD SIMPLE/DOUBLE PAROI

| Cod. Maschio / Male code / Réf. Mâle | Cod. Femmina / Female / Femelle | H | Ø Int. / Inte. / Intér. | Ø Est. / Exte. / Extér. |
|-----------------------------------------|------------------------------------|-----|-------------------------------|-------------------------------|
| DPGDM80M | DPGDM80F | 170 | *80 | 130 |
| DPGDM100M | DPGDM100F | 170 | *100 | 150 |
| DPGDM120M | DPGDM120F | 170 | *120 | 170 |
| DPGDM130M | DPGDM130F | 170 | *130 | 180 |
| DPGDM140M | DPGDM140F | 170 | *140 | 190 |
| DPGDM150M | DPGDM150F | 170 | *150 | 200 |
| DPGDM180M | DPGDM180F | 170 | 180 | 230 |
| DPGDM200M | DPGDM200F | 170 | 200 | 250 |
| DPGDM250M | DPGDM250F | 170 | 250 | 300 |
| DPGDM300M | DPGDM300F | 170 | 300 | 350 |
| DPGDM350M | DPGDM350F | 170 | 350 | 400 |
| 50DPGDM350M | 50DPGDM350F | 250 | 350 | 450 |
| 50DPGDM400M | 50DPGDM400F | 250 | 400 | 500 |
| 50DPGDM450M | 50DPGDM450F | 250 | 450 | 550 |
| 50DPGDM500M | 50DPGDM500F | 250 | 500 | 600 |



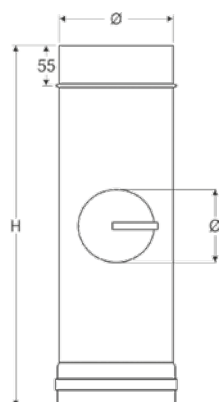
RACCORDO DOPPIA/MONO - DOUBLE/SINGLE WALL ADAPTER - RACCORD DOUBLE/SIMPLE PAROI

| Cod. Maschio / Male code / Réf. Mâle | Cod. Femmina / Female / Femelle | H | Ø Int. / Inte. / Intér. | Ø Est. / Exte. / Extér. |
|-----------------------------------------|------------------------------------|-----|-------------------------------|-------------------------------|
| DPGMD80M | DPGMD80F | 170 | *80 | 130 |
| DPGMD100M | DPGMD100F | 170 | *100 | 150 |
| DPGMD120M | DPGMD120F | 170 | *120 | 170 |
| DPGMD130M | DPGMD130F | 170 | *130 | 180 |
| DPGMD140M | DPGMD140F | 170 | *140 | 190 |
| DPGMD150M | DPGMD150F | 170 | *150 | 200 |
| DPGMD180M | DPGMD180F | 170 | 180 | 230 |
| DPGMD200M | DPGMD200F | 170 | 200 | 250 |
| DPGMD250M | DPGMD250F | 170 | 250 | 300 |
| DPGMD300M | DPGMD300F | 170 | 300 | 350 |
| DPGMD350M | DPGMD350F | 170 | 350 | 400 |
| 50DPGMD350M | 50DPGMD350F | 250 | 350 | 450 |
| 50DPGMD400M | 50DPGMD400F | 250 | 400 | 500 |
| 50DPGMD450M | 50DPGMD450F | 250 | 450 | 550 |
| 50DPGMD500M | 50DPGMD500F | 250 | 500 | 600 |



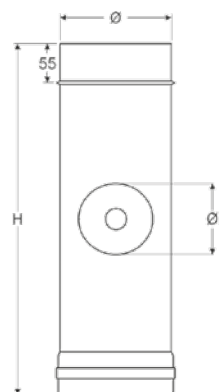
MODULO DI ISPEZIONE CON TAPPO TONDO - ELEMENT WITH ROUND INSPECTION DOOR - ÉLÉMENT AVEC TRAPPE DE VISITE RONDE

| Cod. / Code / Réf. | H | Øi | Ø Int. / Inte. /Intér. | Ø Est. / Exte. / Extér. |
|--------------------|-----|-----|---------------------------|----------------------------|
| DPGISP80/90 | 245 | 80 | *80 | 130 |
| DPGISP100/90 | 245 | 80 | *100 | 150 |
| DPGISP120/90 | 305 | 120 | *120 | 170 |
| DPGISP130/90 | 305 | 130 | *130 | 180 |
| DPGISP140/90 | 315 | 140 | *140 | 190 |
| DPGISP150/90 | 315 | 150 | *150 | 200 |
| DPGISP180/90 | 495 | 180 | 180 | 230 |
| DPGISP200/90 | 495 | 200 | 200 | 250 |
| DPGISP250/90 | 495 | 200 | 250 | 300 |
| DPGISP300/90 | 495 | 250 | 300 | 350 |
| DPGISP350/90 | 495 | 250 | 350 | 400 |
| 50DPGISP350/90 | 495 | 250 | 350 | 450 |
| 50DPGISP400/90 | 495 | 250 | 400 | 500 |
| 50DPGISP450/90 | 495 | 250 | 450 | 550 |
| 50DPGISP500/90 | 495 | 250 | 500 | 600 |



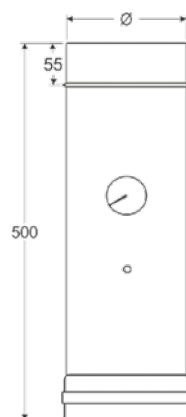
MODULO DI ISPEZIONE CON TAPPO TONDO PER ALTE TEMPERATURE - ELEMENT WITH ROUND INSPECTION DOOR FOR HIGH TEMPERATURES - ÉLÉMENT AVEC TRAPPE DE VISITE RONDE POUR TEMPÉRATURES ÉLEVÉES

| Cod. / Code / Réf. | H | Øi | Ø Int. / Inte. /Intér. | Ø Est. / Exte. / Extér. |
|--------------------|-----|-----|---------------------------|----------------------------|
| DPGISP80/90HT | 245 | 80 | 80 | 130 |
| DPGISP100/90HT | 245 | 80 | 100 | 150 |
| DPGISP120/90HT | 305 | 120 | 120 | 170 |
| DPGISP130/90HT | 305 | 130 | 130 | 180 |
| DPGISP140/90HT | 315 | 140 | 140 | 190 |
| DPGISP150/90HT | 315 | 150 | 150 | 200 |
| DPGISP180/90HT | 495 | 180 | 180 | 230 |
| DPGISP200/90HT | 495 | 200 | 200 | 250 |
| DPGISP250/90HT | 495 | 200 | 250 | 300 |
| DPGISP300/90HT | 495 | 250 | 300 | 350 |
| DPGISP350/90HT | 495 | 250 | 350 | 400 |
| 50DPGISP350/90HT | 495 | 250 | 350 | 450 |
| 50DPGISP400/90HT | 495 | 250 | 400 | 500 |
| 50DPGISP450/90HT | 495 | 250 | 450 | 550 |
| 50DPGISP500/90HT | 495 | 250 | 500 | 600 |



MODULO PRELIEVO FUMI E TEMPERATURA - ELEMENT FOR SMOKES AND TEMPERATURE CHECK - PRÉLÈVEMENT FUMÉE ET TEMPÉRATURE

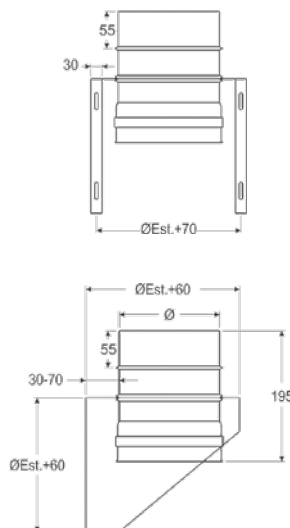
| Cod. / Code / Réf. | Ø Int. / Inte. /Intér. | Ø Est. / Exte. / Extér. |
|--------------------|---------------------------|----------------------------|
| DPGPFT80 | *80 | 130 |
| DPGPFT100 | *100 | 150 |
| DPGPFT120 | *120 | 170 |
| DPGPFT130 | *130 | 180 |
| DPGPFT140 | *140 | 190 |
| DPGPFT150 | *150 | 200 |
| DPGPFT180 | 180 | 230 |
| DPGPFT200 | 200 | 250 |
| DPGPFT250 | 250 | 300 |
| DPGPFT300 | 300 | 350 |
| DPGPFT350 | 350 | 400 |
| 50DPGPFT350 | 350 | 450 |
| 50DPGPFT400 | 400 | 500 |
| 50DPGPFT450 | 450 | 550 |
| 50DPGPFT500 | 500 | 600 |



DP INOX +
DP INOX SP10

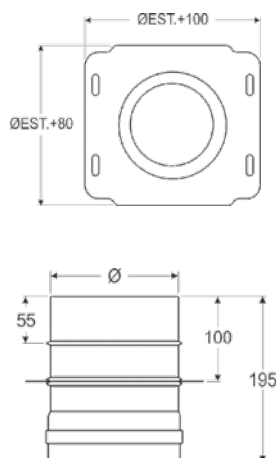
SUPPORTO A MURO - WALL SUPPORT - SUPPORT MURAL

| Cod. / Code / Réf. | Ø Int. / Inte. /Intér. | Ø Est. / Exte. / Extér. |
|--------------------|---------------------------|----------------------------|
| DPGSMU80 | *80 | 130 |
| DPGSMU100 | *100 | 150 |
| DPGSMU120 | *120 | 170 |
| DPGSMU130 | *130 | 180 |
| DPGSMU140 | *140 | 190 |
| DPGSMU150 | *150 | 200 |
| DPGSMU180 | 180 | 230 |
| DPGSMU200 | 200 | 250 |
| DPGSMU250 | 250 | 300 |
| DPGSMU300 | 300 | 350 |
| DPGSMU350 | 350 | 400 |
| 50DPGSMU350 | 350 | 450 |
| 50DPGSMU400 | 400 | 500 |
| 50DPGSMU450 | 450 | 550 |
| 50DPGSMU500 | 500 | 600 |



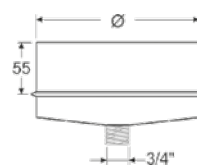
ATTRAVERSAMENTO SOLAIO - INTERMEDIATE ANCHOR PLATE - MODULE DE TRAVERSEMENT DE SOL

| Cod. / Code / Réf. | Ø Int. / Inte. /Intér. | Ø Est. / Exte. / Extér. |
|--------------------|---------------------------|----------------------------|
| DPGSOL80 | *80 | 130 |
| DPGSOL100 | *100 | 150 |
| DPGSOL120 | *120 | 170 |
| DPGSOL130 | *130 | 180 |
| DPGSOL140 | *140 | 190 |
| DPGSOL150 | *150 | 200 |
| DPGSOL180 | 180 | 230 |
| DPGSOL200 | 200 | 250 |
| DPGSOL250 | 250 | 300 |
| DPGSOL300 | 300 | 350 |
| DPGSOL350 | 350 | 400 |
| 50DPGSOL350 | 350 | 450 |
| 50DPGSOL400 | 400 | 500 |
| 50DPGSOL450 | 450 | 550 |
| 50DPGSOL500 | 500 | 600 |



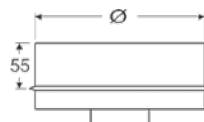
RACCOGLI CONDENSA - DRAIN PLUG - BOUCHON DE CONDENSATION

| Cod. / Code / Réf. | Ø Int. / Inte. /Intér. | Ø Est. / Exte. / Extér. |
|--------------------|---------------------------|----------------------------|
| DPGRC80 | *80 | 130 |
| DPGRC100 | *100 | 150 |
| DPGRC120 | *120 | 170 |
| DPGRC130 | *130 | 180 |
| DPGRC140 | *140 | 190 |
| DPGRC150 | *150 | 200 |
| DPGRC180 | 180 | 230 |
| DPGRC200 | 200 | 250 |
| DPGRC250 | 250 | 300 |
| DPGRC300 | 300 | 350 |
| DPGRC350 | 350 | 400 |
| 50DPGRC350 | 350 | 450 |
| 50DPGRC400 | 400 | 500 |
| 50DPGRC450 | 450 | 550 |
| 50DPGRC500 | 500 | 600 |



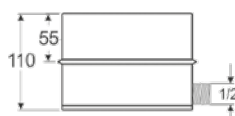
TAPPO CON MANIGLIA - DRAIN PLUG WITH HANDLE - BOUCHON DE CONDENSATION ÉTANCHE

| Cod. / Code / Réf. | Ø Int. / Inte. /Intér. | Ø Est. / Exte. / Extér. |
|--------------------|---------------------------|----------------------------|
| DPGMAN80 | *80 | 130 |
| DPGMAN100 | *100 | 150 |
| DPGMAN120 | *120 | 170 |
| DPGMAN130 | *130 | 180 |
| DPGMAN140 | *140 | 190 |
| DPGMAN150 | *150 | 200 |
| DPGMAN180 | 180 | 230 |
| DPGMAN200 | 200 | 250 |
| DPGMAN250 | 250 | 300 |
| DPGMAN300 | 300 | 350 |
| DPGMAN350 | 350 | 400 |
| 50DPGMAN350 | 350 | 450 |
| 50DPGMAN400 | 400 | 500 |
| 50DPGMAN450 | 450 | 550 |
| 50DPGMAN500 | 500 | 600 |



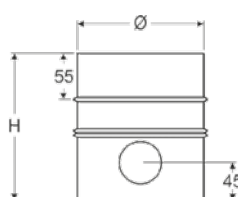
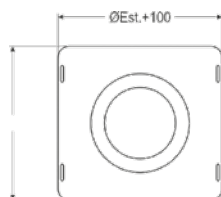
RACCOGLI CONDENSA PER COLLETTORE - LATERAL DRAIN PLUG - BOUCHON DE CONDENSATION AVEC ÉVACUATION LATÉRALE

| Cod. / Code / Réf. | Ø Int. / Inte. /Intér. | Ø Est. / Exte. / Extér. |
|--------------------|---------------------------|----------------------------|
| DPGRC80COL | *80 | 130 |
| DPGRC100COL | *100 | 150 |
| DPGRC120COL | *120 | 170 |
| DPGRC130COL | *130 | 180 |
| DPGRC140COL | *140 | 190 |
| DPGRC150COL | *150 | 200 |
| DPGRC180COL | 180 | 230 |
| DPGRC200COL | 200 | 250 |
| DPGRC250COL | 250 | 300 |
| DPGRC300COL | 300 | 350 |
| DPGRC350COL | 350 | 400 |



BASE DI PARTENZA CON SCARICO LATERALE - BASE PLATE WITH LATERAL DRAIN - PLAQUE DE DÉPART AVEC ÉVACUATION LATÉRALE

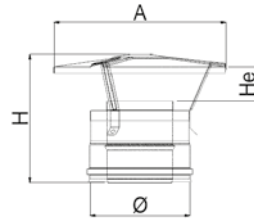
| Cod. / Code / Réf. | H | Ø Int. / Inte. /Intér. | Ø Est. / Exte. / Extér. |
|--------------------|-----|---------------------------|----------------------------|
| DPGRCL80 | 170 | *80 | 130 |
| DPGRCL100 | 170 | *100 | 150 |
| DPGRCL120 | 170 | *120 | 170 |
| DPGRCL130 | 170 | *130 | 180 |
| DPGRCL140 | 170 | *140 | 190 |
| DPGRCL150 | 170 | *150 | 200 |
| DPGRCL180 | 170 | 180 | 230 |
| DPGRCL200 | 170 | 200 | 250 |
| DPGRCL250 | 170 | 250 | 300 |
| DPGRCL300 | 170 | 300 | 350 |
| DPGRCL350 | 240 | 350 | 400 |
| 50DPGRCL350 | 240 | 350 | 450 |
| 50DPGRCL400 | 240 | 400 | 500 |
| 50DPGRCL450 | 240 | 450 | 550 |
| 50DPGRCL500 | 240 | 500 | 600 |



DP INOX +
DP INOX SP10

COMIGNOLO CINESE - CHINESE CAP - CHAPEAU CHINOIS

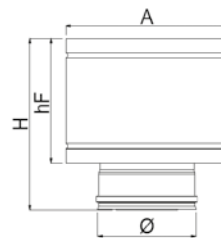
| Cod. / Code / Réf. | H | A | He | Ø Int. / Inte. /Intér. | Ø Est. / Exte. /Extér. |
|--------------------|-----|-----|-----|---------------------------|---------------------------|
| DPGCIN80 | 195 | 265 | 70 | 80 | 130 |
| DPGCIN100 | 200 | 265 | 75 | 100 | 150 |
| DPGCIN120 | 215 | 320 | 90 | 120 | 170 |
| DPGCIN130 | 215 | 320 | 90 | 130 | 180 |
| DPGCIN140 | 225 | 320 | 100 | 140 | 190 |
| DPGCIN150 | 225 | 320 | 100 | 150 | 200 |
| DPGCIN180 | 250 | 400 | 110 | 180 | 230 |
| DPGCIN200 | 250 | 400 | 125 | 200 | 250 |
| DPGCIN250 | 275 | 500 | 150 | 250 | 300 |
| DPGCIN300 | 300 | 600 | 175 | 300 | 350 |
| DPGCIN350 | 320 | 600 | 200 | 350 | 400 |
| 50DPGCIN350 | 220 | 530 | 100 | 350 | 450 |
| 50DPGCIN400 | 220 | 580 | 100 | 400 | 500 |
| 50DPGCIN450 | 220 | 630 | 100 | 450 | 550 |
| 50DPGCIN500 | 220 | 680 | 100 | 500 | 600 |



FASCETTA NON INCLUSA - Clamp not included - Collier de jonction pas compris

COMIGNOLO ANTIVENTO - WINDPROOF CAP - CHAPEAU ANTI-INTEMPÉRIE

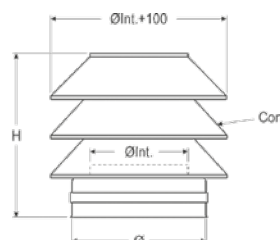
| Cod. / Code / Réf. | H | A | Hf | Ø Int. / Inte. /Intér. | Ø Est. / Exte. /Extér. |
|--------------------|-----|-----|-----|---------------------------|---------------------------|
| DPGAV80 | 240 | 220 | 165 | 80 | 130 |
| DPGAV100 | 260 | 260 | 200 | 100 | 150 |
| DPGAV120 | 280 | 300 | 200 | 120 | 170 |
| DPGAV130 | 280 | 300 | 200 | 130 | 180 |
| DPGAV140 | 320 | 310 | 250 | 140 | 190 |
| DPGAV150 | 320 | 310 | 250 | 150 | 200 |
| DPGAV180 | 340 | 370 | 250 | 180 | 230 |
| DPGAV200 | 340 | 420 | 250 | 200 | 250 |
| DPGAV250 | 400 | 470 | 310 | 250 | 300 |
| DPGAV300 | 400 | 530 | 310 | 300 | 350 |
| DPGAV350 | 400 | 610 | 310 | 350 | 400 |
| 50DPGAV350 | 400 | 650 | 310 | 350 | 450 |
| 50DPGAV400 | 400 | 700 | 310 | 400 | 500 |
| 50DPGAV450 | 400 | 750 | 310 | 450 | 550 |
| 50DPGAV500 | 400 | 800 | 310 | 500 | 600 |



FASCETTA NON INCLUSA - Clamp not included - Collier de jonction pas compris

COMIGNOLO TORRINO - TOWER CAP - CHAPEAU DONJON

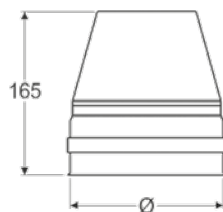
| Cod. / Code / Réf. | H | N° CONI | Ø Int. / Inte. /Intér. | Ø Est. / Exte. /Extér. |
|--------------------|-----|---------|---------------------------|---------------------------|
| DPGTOR80 | 330 | 3 | 80 | 130 |
| DPGTOR100 | 330 | 3 | 100 | 150 |
| DPGTOR120 | 330 | 3 | 120 | 170 |
| DPGTOR130 | 330 | 3 | 130 | 180 |
| DPGTOR140 | 330 | 3 | 140 | 190 |
| DPGTOR150 | 330 | 3 | 150 | 200 |
| DPGTOR180 | 390 | 4 | 180 | 230 |
| DPGTOR200 | 390 | 4 | 200 | 250 |
| DPGTOR250 | 390 | 4 | 250 | 300 |
| DPGTOR300 | 390 | 5 | 300 | 350 |
| DPGTOR350 | 390 | 5 | 350 | 400 |



FASCETTA NON INCLUSA - Clamp not included - Collier de jonction pas compris

COMIGNOLO TRONCO-CONICO - CONE TERMINAL - CÔNE DE FINITION

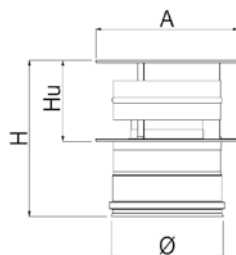
| Cod. / Code / Réf. | Ø Int. / Inte. /Intér. | Ø Est. / Exte. / Extér. |
|--------------------|---------------------------|----------------------------|
| DPGTC80 | 80 | 130 |
| DPGTC100 | 100 | 150 |
| DPGTC120 | 120 | 170 |
| DPGTC130 | 130 | 180 |
| DPGTC140 | 140 | 190 |
| DPGTC150 | 150 | 200 |
| DPGTC180 | 180 | 230 |
| DPGTC200 | 200 | 250 |
| DPGTC250 | 250 | 300 |
| DPGTC300 | 300 | 350 |
| DPGTC350 | 350 | 400 |
| 50DPGTC350 | 350 | 450 |
| 50DPGTC400 | 400 | 500 |
| 50DPGTC450 | 450 | 550 |
| 50DPGTC500 | 500 | 600 |



FASCETTA NON INCLUSA - Clamp not included - Collier de jonction pas compris

COMIGNOLO ANTIPIOGGIA - WATERPROOF CAP - CHAPEAU ANTI-PLUIE

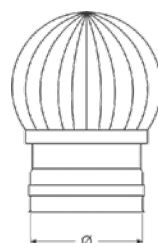
| Cod. / Code / Réf. | H | A | Hu | Ø Int. / Inte. /Intér. | Ø Est. / Exte. / Extér. |
|--------------------|-----|-----|-----|---------------------------|----------------------------|
| DPGAP80 | 220 | 200 | 115 | 80 | 130 |
| DPGAP100 | 220 | 200 | 115 | 100 | 150 |
| DPGAP120 | nd. | nd. | nd. | 120 | 170 |
| DPGAP130 | 285 | 300 | 180 | 130 | 180 |
| DPGAP140 | nd. | nd. | nd. | 140 | 190 |
| DPGAP150 | 315 | 350 | 210 | 150 | 200 |
| DPGAP180 | 350 | 450 | 245 | 180 | 230 |
| DPGAP200 | 350 | 450 | 245 | 200 | 250 |
| DPGAP250 | 410 | 560 | 305 | 250 | 300 |
| DPGAP300 | 470 | 680 | 365 | 300 | 350 |



FASCETTA NON INCLUSA - Clamp not included - Collier de jonction pas compris

COMIGNOLO EOLICO - AEOLIAN CAP - CHAPEAU ÉOLIEN

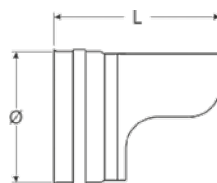
| Cod. Femmina / Female code / Réf. Femelle | Ø |
|----------------------------------------------|-----|
| EO80DPI | 80 |
| EO100DPI | 100 |
| EO120DPI | 120 |
| EO130DPI | 130 |
| EO140DPI | 140 |
| EO150DPI | 150 |
| EO180DPI | 180 |
| EO200DPI | 200 |
| EO250DPI | 250 |
| EO300DPI | 300 |
| EO350DPI | 350 |



DP INOX +
DP INOX SP10

TERMINALE ORIZZONTALE DOPPIA PARETE - DOUBLE WALL HORIZONTAL ENDING PART - TERMINAL HORIZONTAL À BEC DOUBLE PAROI

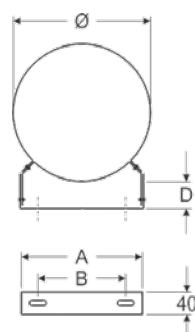
| Cod. / Code / Réf. | L | Ø Int. / Inte. /Intér. | Ø Est. / Exte. / Extér. |
|--------------------|-----|---------------------------|----------------------------|
| DPGT080 | 187 | 80 | 130 |
| DPGT0100 | 202 | 100 | 150 |
| DPGT0120 | 220 | 120 | 170 |
| DPGT0130 | 225 | 130 | 180 |
| DPGT0140 | 235 | 140 | 190 |
| DPGT0150 | 240 | 150 | 200 |
| DPGT0180 | 262 | 180 | 230 |
| DPGT0200 | 277 | 200 | 250 |
| DPGT0250 | 315 | 250 | 300 |
| DPGT0300 | 352 | 300 | 350 |
| DPGT0350 | 389 | 350 | 400 |



FASCETTA NON INCLUSA - Clamp not included - Collier de jonction pas compris

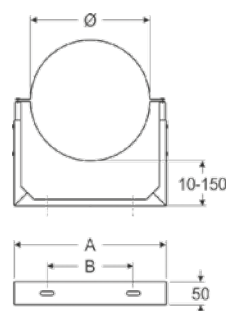
STAFFA DI FISSAGGIO A PARETE REGOLABILE DA 50 A 80 mm - ADJUSTABLE WALL BRACKET FROM 50 TO 80 mm - COLLIER DE FIXATION MURAL RÉGLABLE DE 50 À 80 mm

| Cod. / Code / Réf. | Ø | A | B | D |
|--------------------|-----|-----|-----|-------|
| MPS130 | 130 | 130 | 70 | 50-80 |
| MPS150 | 150 | 148 | 86 | 50-80 |
| MPS170 | 170 | 165 | 104 | 50-80 |
| MPS180 | 180 | 172 | 110 | 50-80 |
| MPS190 | 190 | 177 | 112 | 50-80 |
| MPS200 | 200 | 185 | 121 | 50-80 |
| MPS230 | 230 | 205 | 129 | 50-80 |
| MPS250 | 250 | 220 | 155 | 50-80 |
| MPS300 | 300 | 253 | 190 | 50-80 |
| MPS350 | 350 | 290 | 228 | 50-80 |
| MPS400 | 400 | 330 | 230 | 50-80 |
| MPS450 | 450 | 360 | 296 | 50-80 |
| MPS500 | 500 | 390 | 290 | 50-80 |
| MPS550 | 550 | 440 | 340 | 50 |
| MPS600 | 600 | 490 | 390 | 50 |



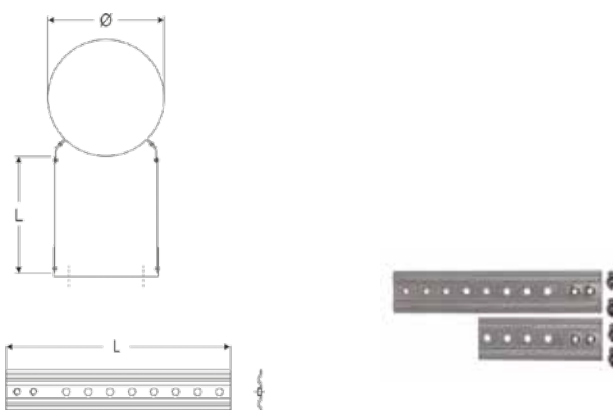
STAFFA DI FISSAGGIO A PARETE REGOLABILE DA 10 A 150 mm - ADJUSTABLE WALL BRACKET FROM 10 TO 150 mm - COLLIER DE FIXATION MURAL RÉGLABLE DE 10 À 150 mm

| Cod. / Code / Réf. | Ø | A | B |
|--------------------|-----|-----|-----|
| MPSREG130 | 130 | 180 | 117 |
| MPSREG150 | 150 | 200 | 134 |
| MPSREG170 | 170 | 220 | 135 |
| MPSREG180 | 180 | 230 | 170 |
| MPSREG190 | 190 | 240 | 176 |
| MPSREG200 | 200 | 250 | 179 |
| MPSREG230 | 230 | 280 | 195 |
| MPSREG250 | 250 | 300 | 175 |
| MPSREG300 | 300 | 350 | 245 |
| MPSREG350 | 350 | 400 | 320 |
| MPSREG400 | 400 | 450 | 376 |
| MPSREG450 | 450 | 500 | 424 |
| MPSREG500 | 500 | 550 | 427 |
| MPSREG550 | 550 | 600 | 477 |
| MPSREG600 | 600 | 650 | 527 |



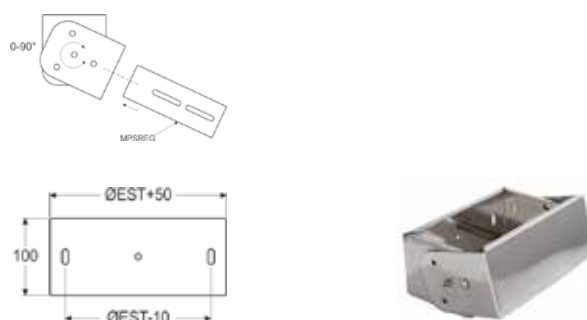
PROLUNGA PER MPS - MPS EXTENSION - RALLONGE POUR MPS

| Cod. / Code / Réf. | L |
|--------------------|-------|
| PROLMPS105I | 105mm |
| PROLMPS205I | 205mm |



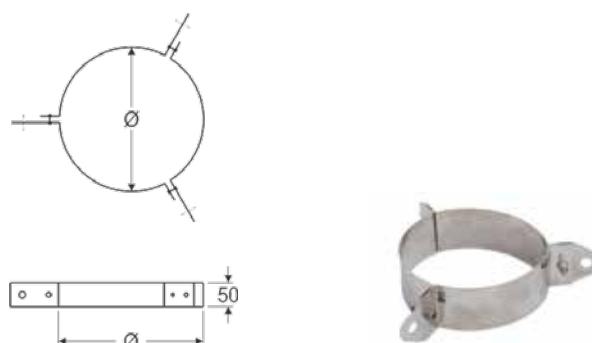
STAFFA REGOLABILE PER CORNICIONE - ADJUSTABLE ROOF BRACKET - SUPPORT RÉGLABLE POUR CORNICHE

| Cod. / Code / Réf. | Ø |
|--------------------|-----|
| MPSCOR130 | 130 |
| MPSCOR150 | 150 |
| MPSCOR170 | 170 |
| MPSCOR180 | 180 |
| MPSCOR190 | 190 |
| MPSCOR200 | 200 |
| MPSCOR230 | 230 |
| MPSCOR250 | 250 |
| MPSCOR300 | 300 |
| MPSCOR350 | 350 |



COLLARE PER CAVITIRANTI - GUY WIRE BRACKET - BRIDE DE HAUBANAGE

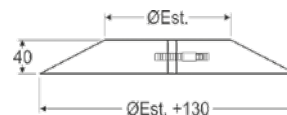
| Cod. / Code / Réf. | Ø |
|--------------------|-----|
| MPCOL130 | 130 |
| MPCOL150 | 150 |
| MPCOL170 | 170 |
| MPCOL180 | 180 |
| MPCOL190 | 190 |
| MPCOL200 | 200 |
| MPCOL230 | 230 |
| MPCOL250 | 250 |
| MPCOL300 | 300 |
| MPCOL350 | 350 |
| MPCOL400 | 400 |
| MPCOL450 | 450 |
| MPCOL500 | 500 |
| MPCOL550 | 550 |
| MPCOL600 | 600 |



DP INOX +
DP INOX SP10

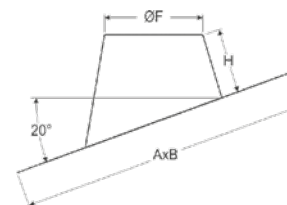
GREMBIULINA DITENUTA - STORM COLLAR - COLLET ANTI-INTEMPÉRIE

| Cod. / Code / Réf. | Ø |
|--------------------|-----|
| MPGRE130 | 130 |
| MPGRE150 | 150 |
| MPGRE170 | 170 |
| MPGRE180 | 180 |
| MPGRE190 | 190 |
| MPGRE200 | 200 |
| MPGRE230 | 230 |
| MPGRE250 | 250 |
| MPGRE300 | 300 |
| MPGRE350 | 350 |
| MPGRE400 | 400 |
| MPGRE450 | 450 |
| MPGRE500 | 500 |
| MPGRE550 | 550 |
| MPGRE600 | 600 |



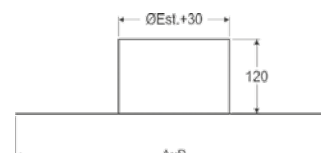
FALDALE PERTETTI INCLINATI CON BASE IN PIOMBO - FLASHING FOR SLOPED ROOFS WITH LEAD BASE - SOLIN DE TOITS PENTU AVEC BASE EN PLOMB

| Cod. / Code / Réf. | Ø | ØF | A | B | H |
|--------------------|-----|-----|------|------|-----|
| MPFI130 | 130 | 160 | 500 | 700 | 180 |
| MPFI150 | 150 | 180 | 500 | 700 | 180 |
| MPFI170 | 170 | 210 | 700 | 1000 | 180 |
| MPFI180 | 180 | 210 | 700 | 1000 | 180 |
| MPFI190 | 190 | 230 | 700 | 1000 | 180 |
| MPFI200 | 200 | 230 | 700 | 1000 | 180 |
| MPFI230 | 230 | 260 | 700 | 1000 | 180 |
| MPFI250 | 250 | 280 | 700 | 1000 | 180 |
| MPFI300 | 300 | 330 | 700 | 1000 | 180 |
| MPFI350 | 350 | 380 | 1000 | 1000 | 180 |
| MPFI400 | 400 | 430 | 1000 | 1000 | 120 |



FALDALE PERTETTI PIANI - FLASHING FOR FLAT ROOFS - SOLIN DE TOITS TERRASSE

| Cod. / Code / Réf. | Ø | A | B |
|--------------------|-----|-----|-----|
| MPFP130 | 130 | 310 | 310 |
| MPFP150 | 150 | 330 | 330 |
| MPFP170 | 170 | 350 | 350 |
| MPFP180 | 180 | 360 | 360 |
| MPFP190 | 190 | 370 | 370 |
| MPFP200 | 200 | 380 | 380 |
| MPFP230 | 230 | 410 | 410 |
| MPFP250 | 250 | 430 | 430 |
| MPFP300 | 300 | 480 | 480 |
| MPFP350 | 350 | 490 | 490 |
| MPFP400 | 400 | 580 | 580 |



FASCETTA STRINGITUBO - CLAMP - COLLIER DE JONCTION SIMPLE

| Cod. / Code / Réf. | Ø |
|--------------------|-----|
| 42MPFASC130 | 130 |
| 42MPFASC150 | 150 |
| 42MPFASC170 | 170 |
| 42MPFASC180 | 180 |
| 42MPFASC190 | 190 |
| 42MPFASC200 | 200 |
| 42MPFASC230 | 230 |
| 42MPFASC250 | 250 |
| 42MPFASC300 | 300 |
| 42MPFASC350 | 350 |
| 42MPFASC400 | 400 |
| 30MPFASC450 | 450 |
| 30MPFASC500 | 500 |
| 30MPFASC550 | 550 |
| 30MPFASC600 | 600 |



GUARNIZIONE - GASKET - JOINT D'ÉTANCHÉITÉ

| Cod. / Code / Réf. H12 - 12mm | Cod. / Cod. / Réf. H9 - 9mm. | Ø |
|----------------------------------|---------------------------------|-----|
| G3L80 | G3L80H9 | 80 |
| G3L100 | G3L100H9 | 100 |
| G3L120 | G3L120H9 | 120 |
| G3L130 | G3L130H9 | 130 |
| G3L140 | G3L140H9 | 140 |
| G3L150 | G3L150H9 | 150 |
| G3L180 | G3L180H9 | 180 |
| G3L200 | G3L200H9 | 200 |
| G3L250 | G3L250H9 | 250 |
| G3L300 | G3L300H9 | 300 |
| G3L350 | G3L350H9 | 350 |
| G3L400 | G3L400H9 | 400 |
| G3L450 | G3L450H9 | 450 |
| G3L500 | G3L500H9 | 500 |



DP INOX +
 DP INOX SP10